

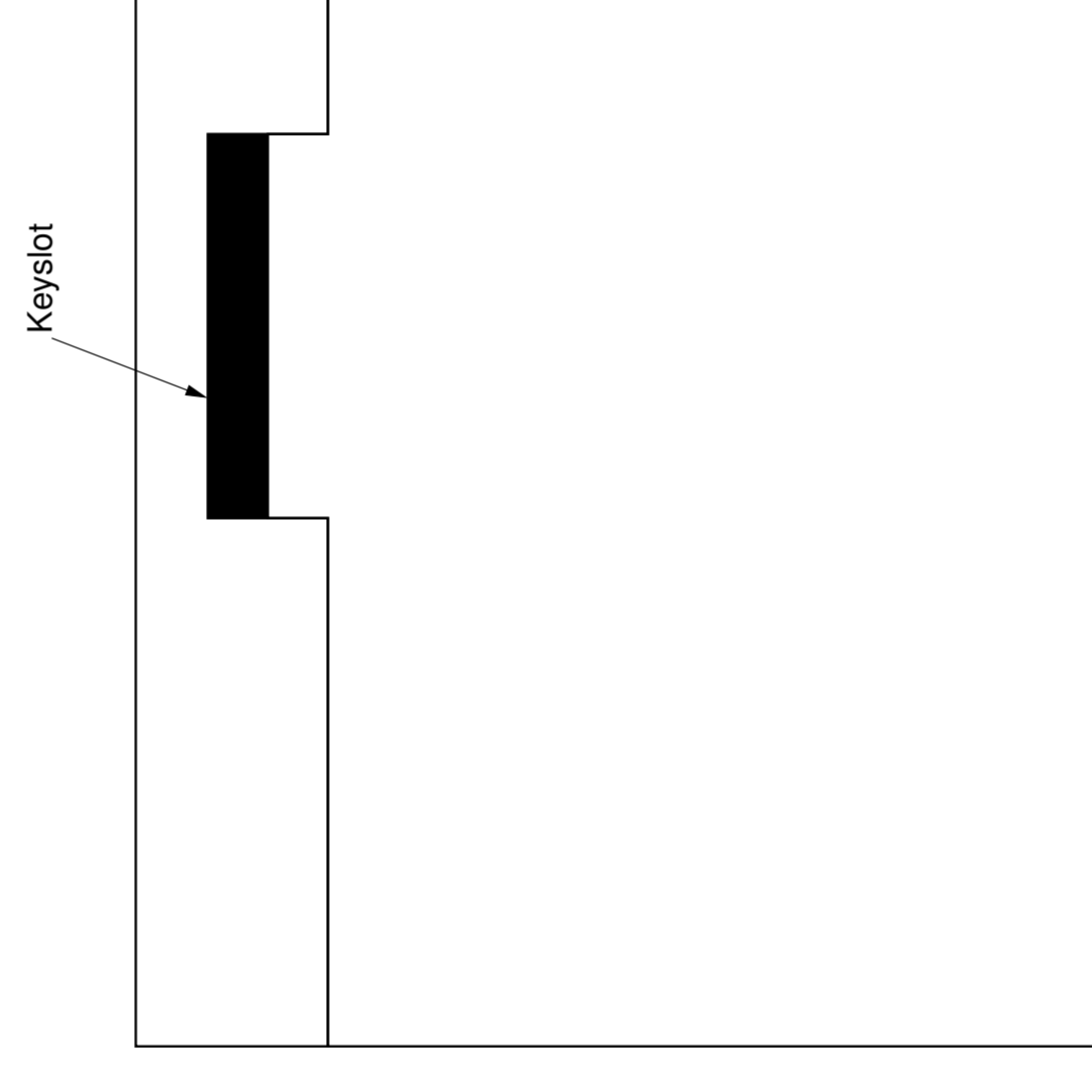
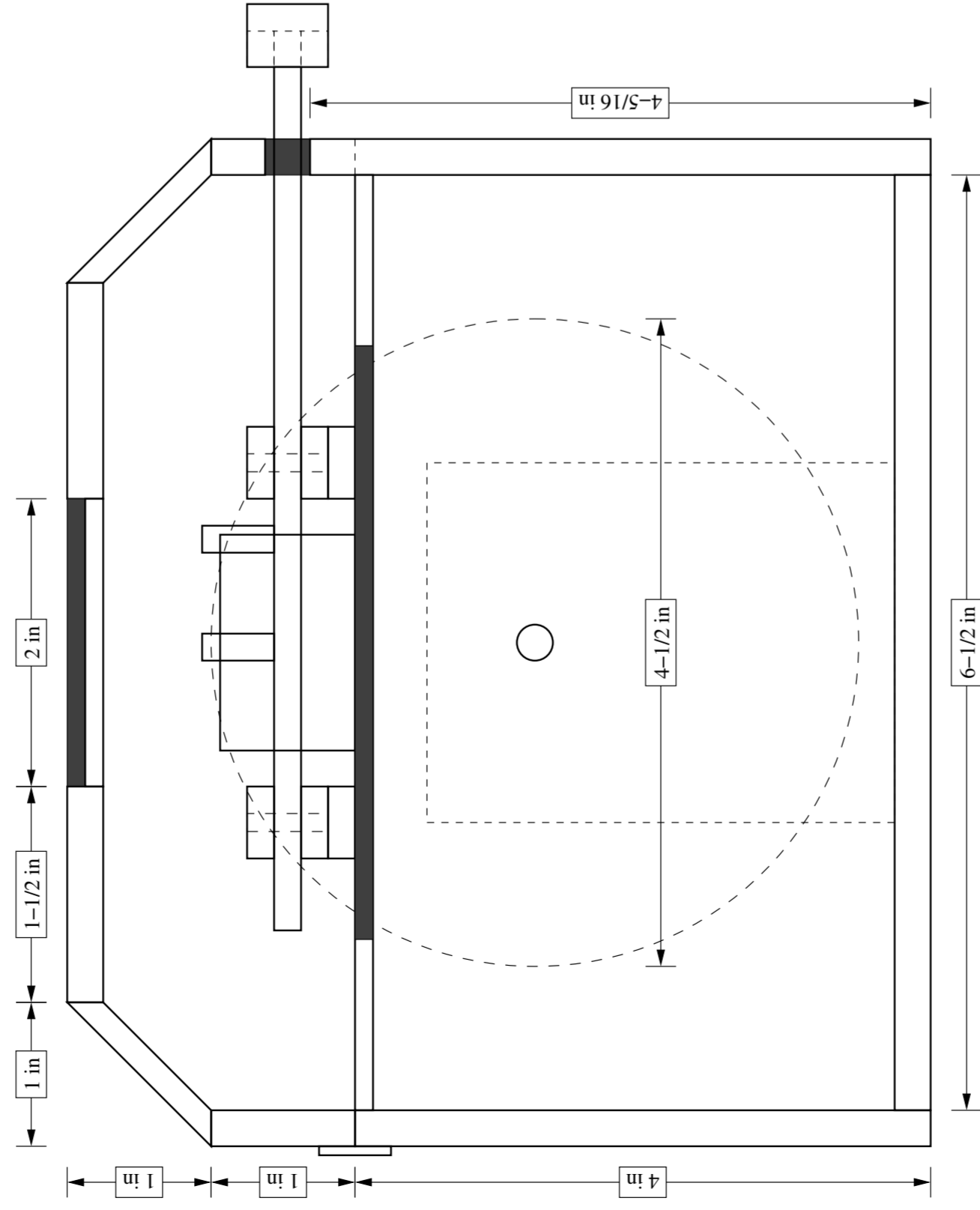
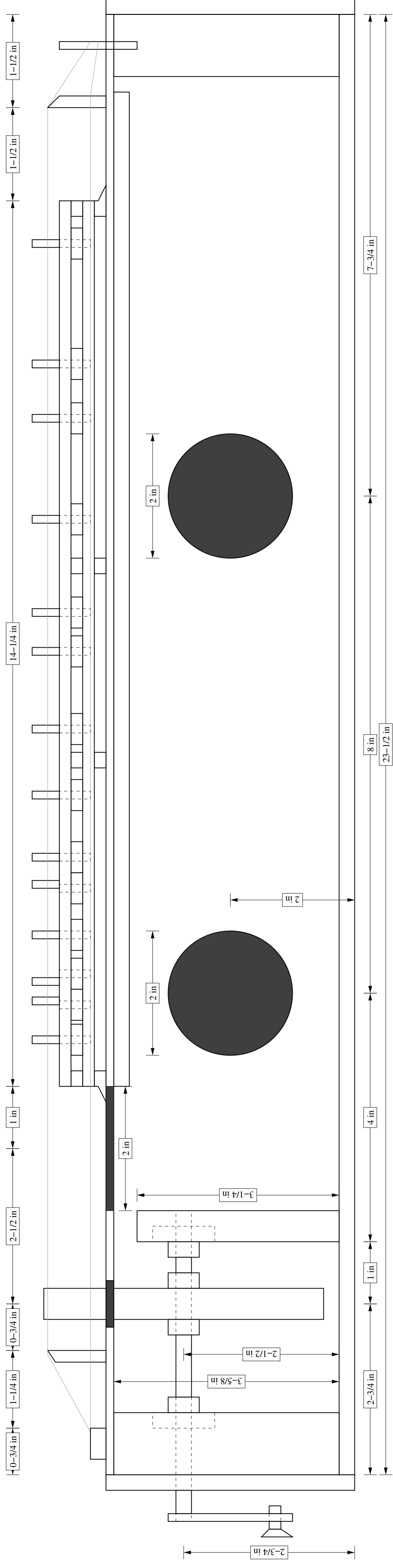


B1 = 11/16" (3/16" from left)  
 C1 = 3/16"  
 D1 = 7/16"  
 E1 = 5/8" (1/16" from left)  
 F1 = 1/16"  
 G2 = 3/16"

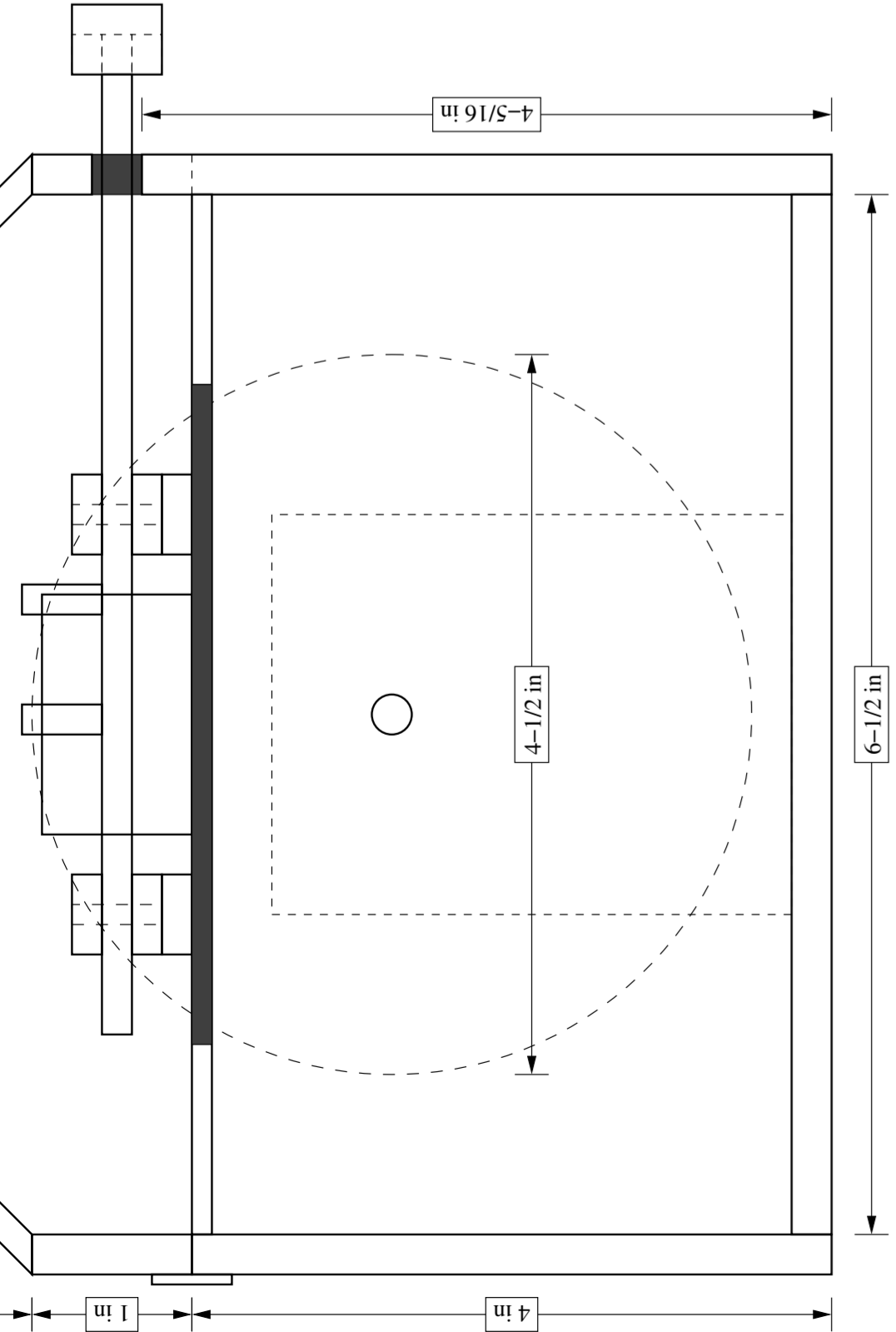
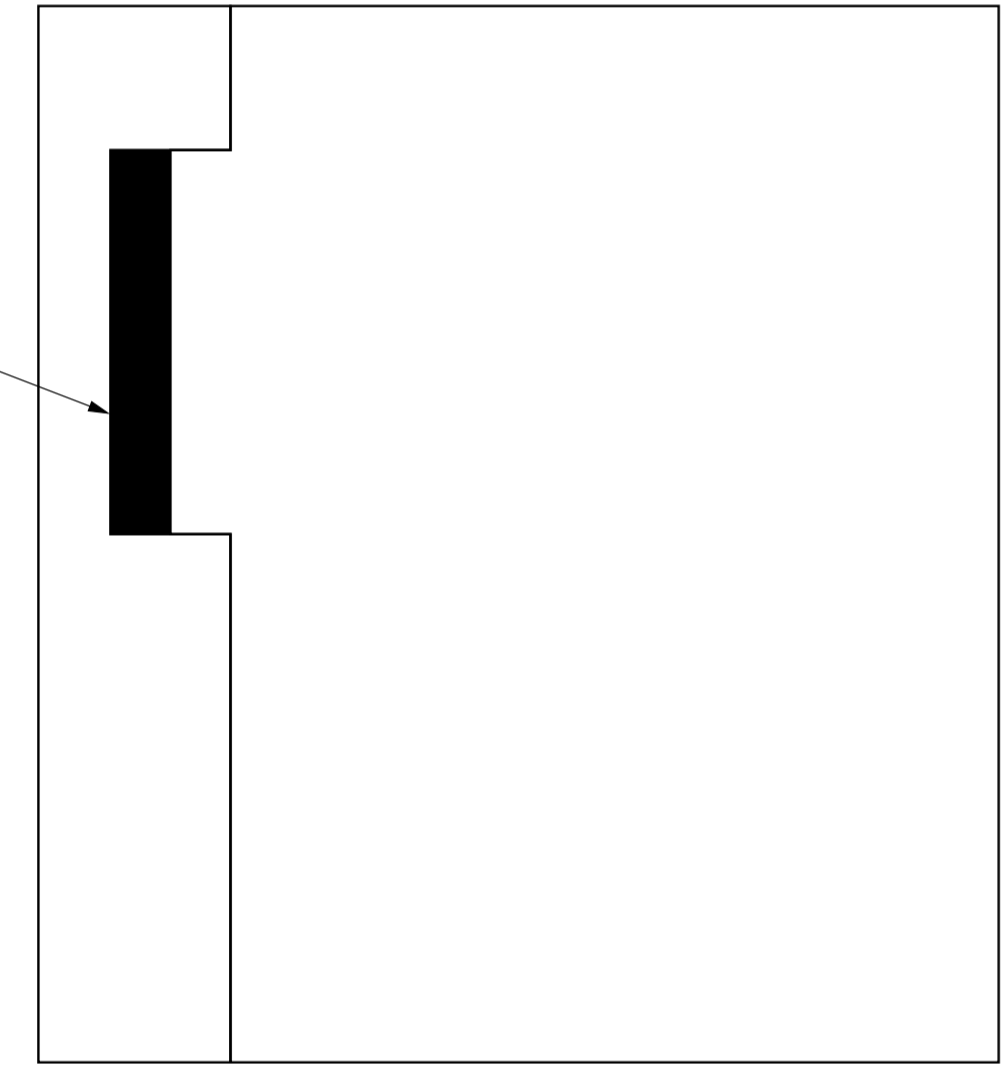
B2 = 10 - 1/2"  
 C2 = 11"  
 D2 = 11 - 13/16"  
 E2 = 12 - 7/16"  
 F2 = 12 - 15/16"  
 G2 = 13 - 1/2"

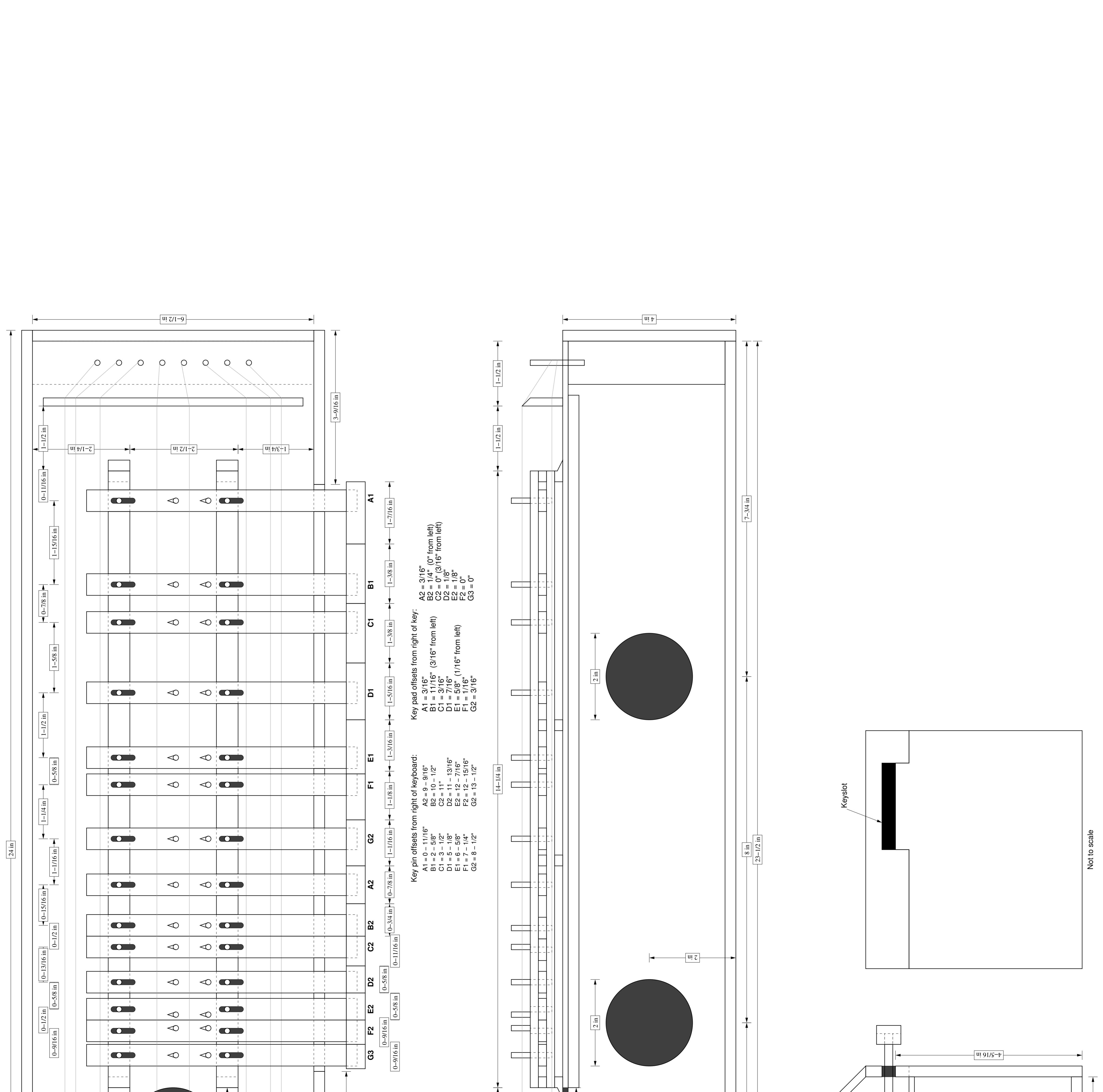
B1 = 2 - 5/8"  
 C1 = 3 - 1/2"  
 D1 = 5 - 1/8"  
 E1 = 6 - 5/8"  
 F1 = 7 - 1/4"  
 G2 = 8 - 1/2"

B2 = 1/4" (0" from left)  
 C2 = 0" (3/16" from left)  
 D2 = 1/8"  
 E2 = 1/8"  
 F2 = 0"  
 G3 = 0"

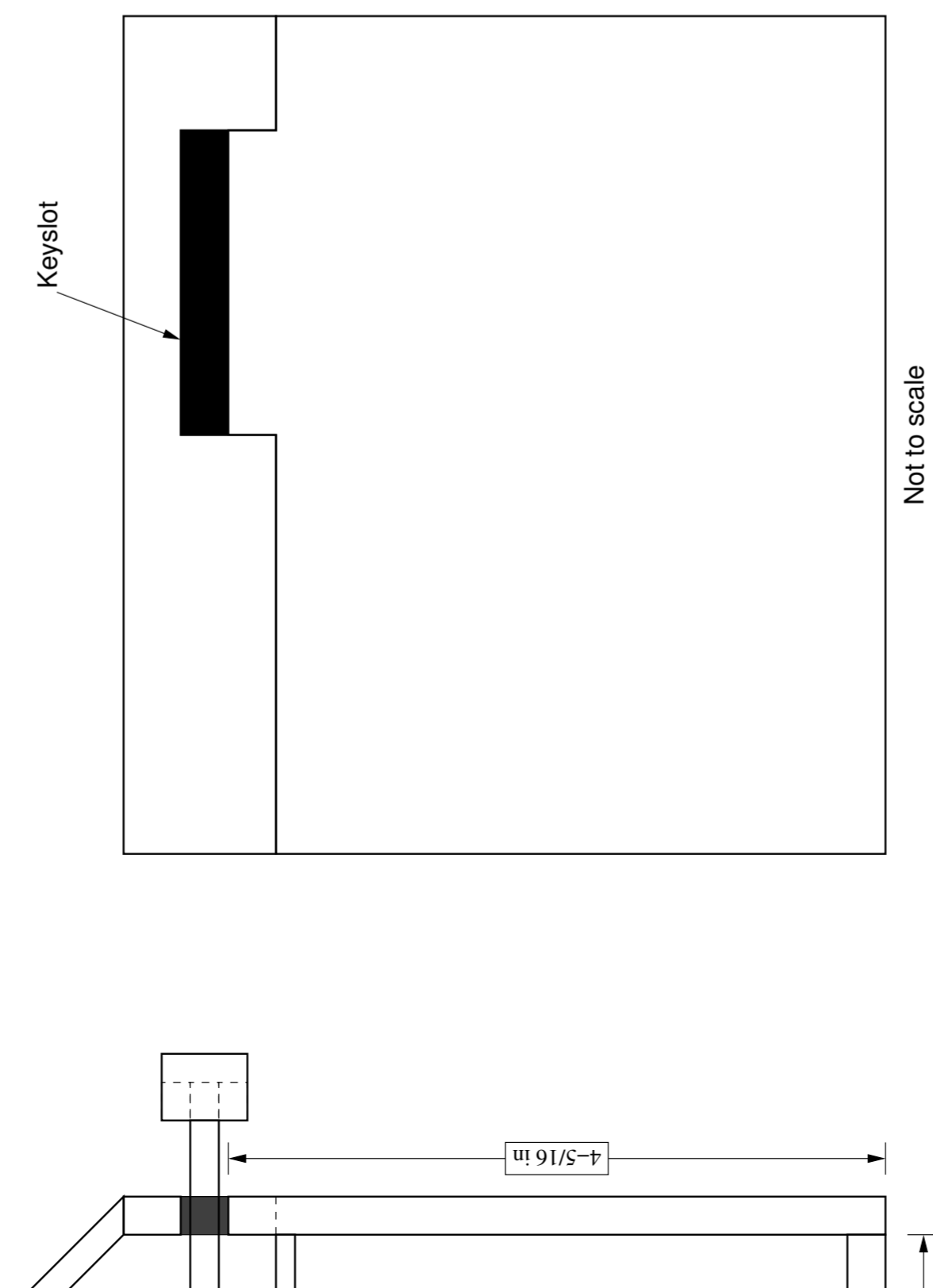
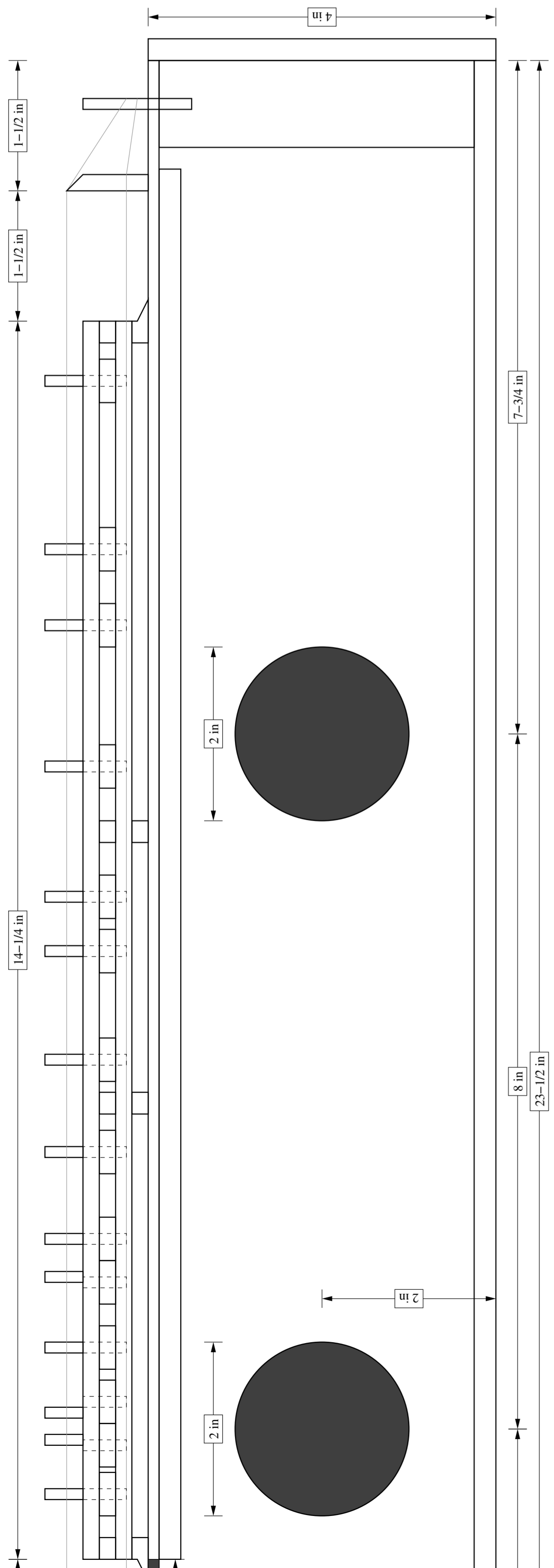


Not to scale

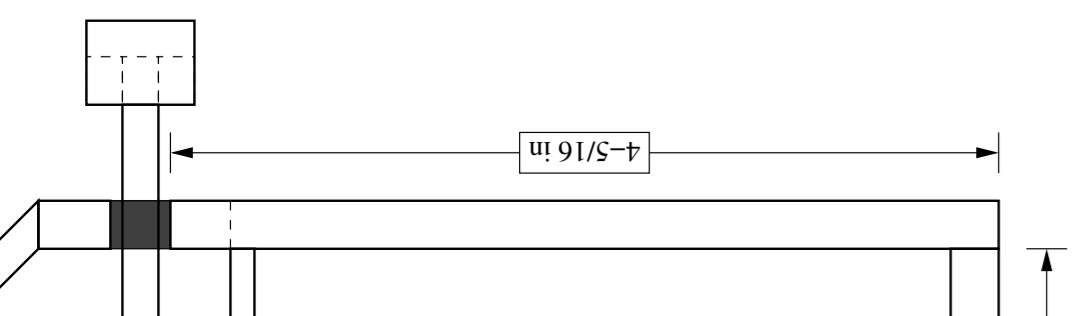
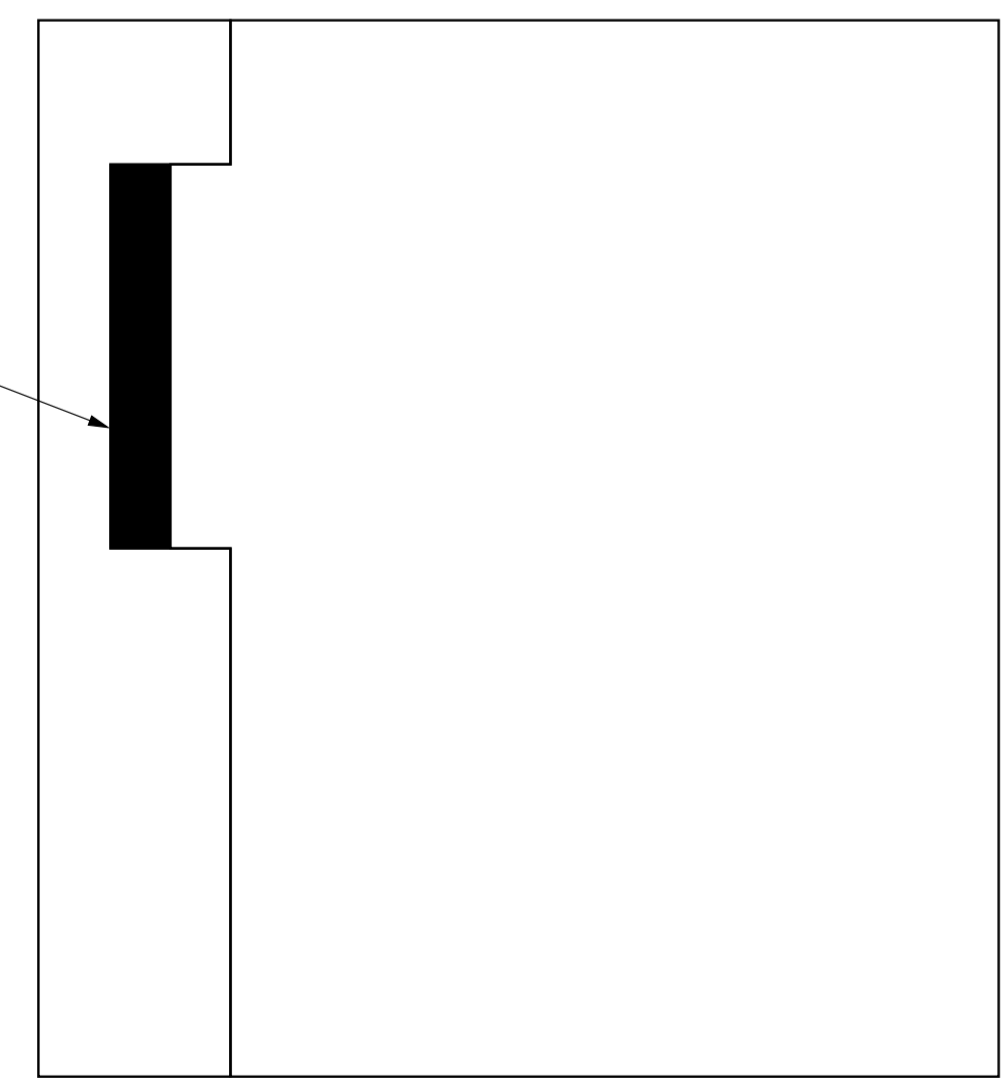


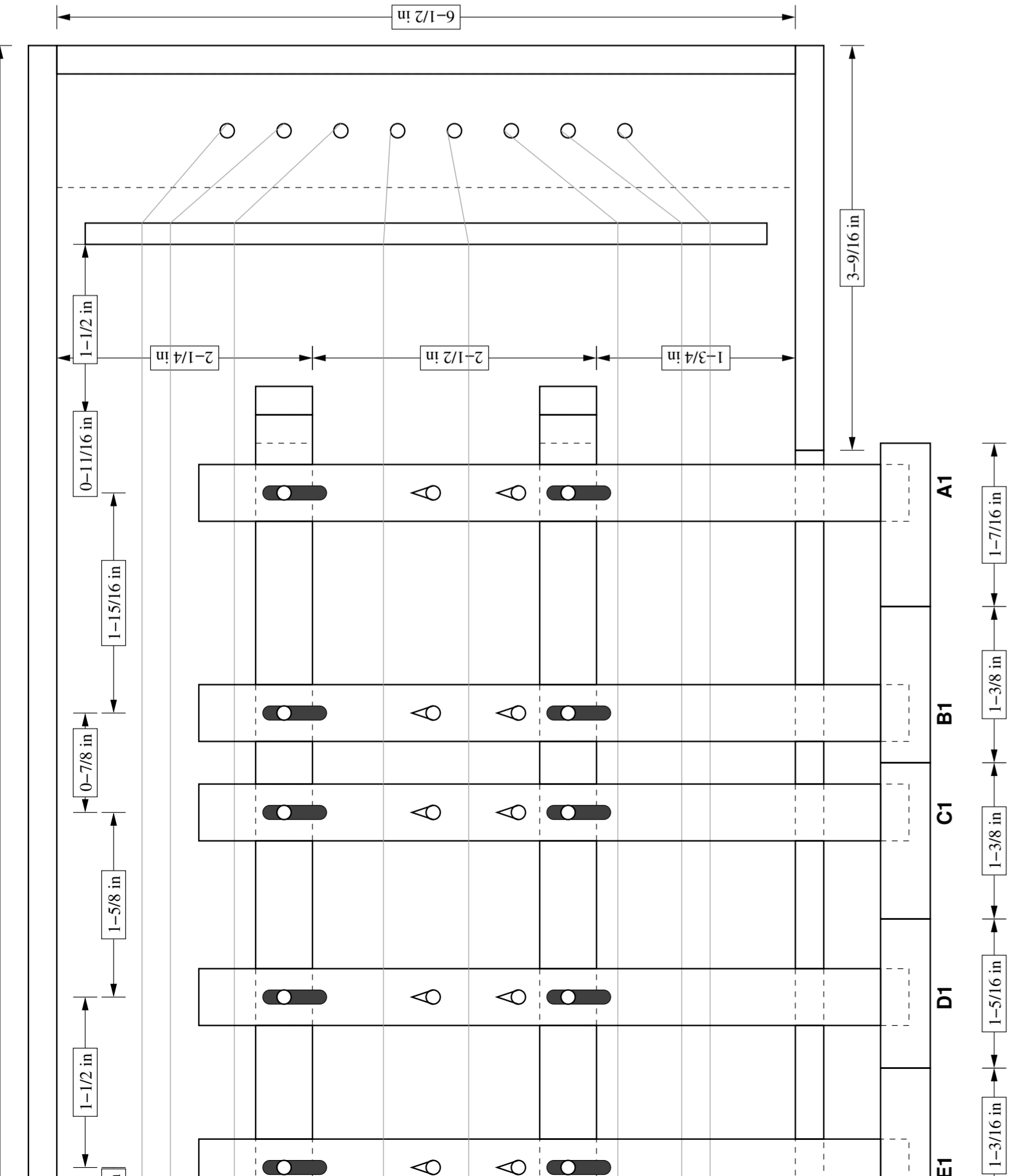


- B1 = 2 - 5/8"
- C1 = 3 - 1/2"
- D1 = 5 - 1/8"
- E1 = 6 - 5/8"
- F1 = 7 - 1/4"
- G2 = 8 - 1/2"
- B2 = 10 - 1/2"
- C2 = 11"
- D2 = 11 - 13/16"
- E2 = 12 - 7/16"
- F2 = 12 - 15/16"
- G2 = 13 - 1/2"
- B1 = 11/16" (3/16" from left)
- C1 = 3/16"
- D1 = 7/16"
- E1 = 5/8" (1/16" from left)
- F1 = 1/16"
- G2 = 3/16"
- B2 = 1/4" (0" from left)
- C2 = 0" (3/16" from left)
- D2 = 1/8"
- E2 = 1/8"
- F2 = 0"
- G3 = 0"



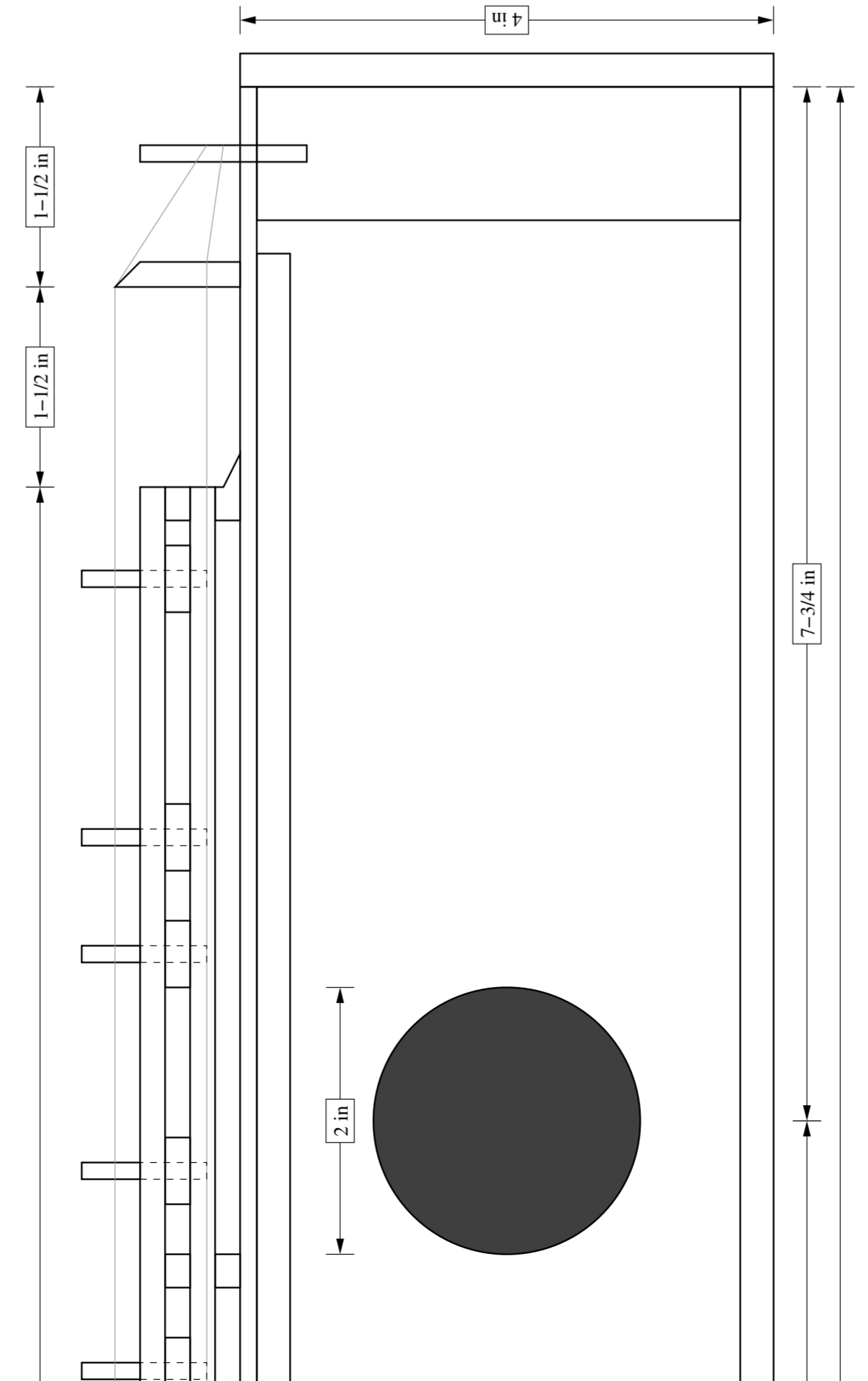
Not to scale





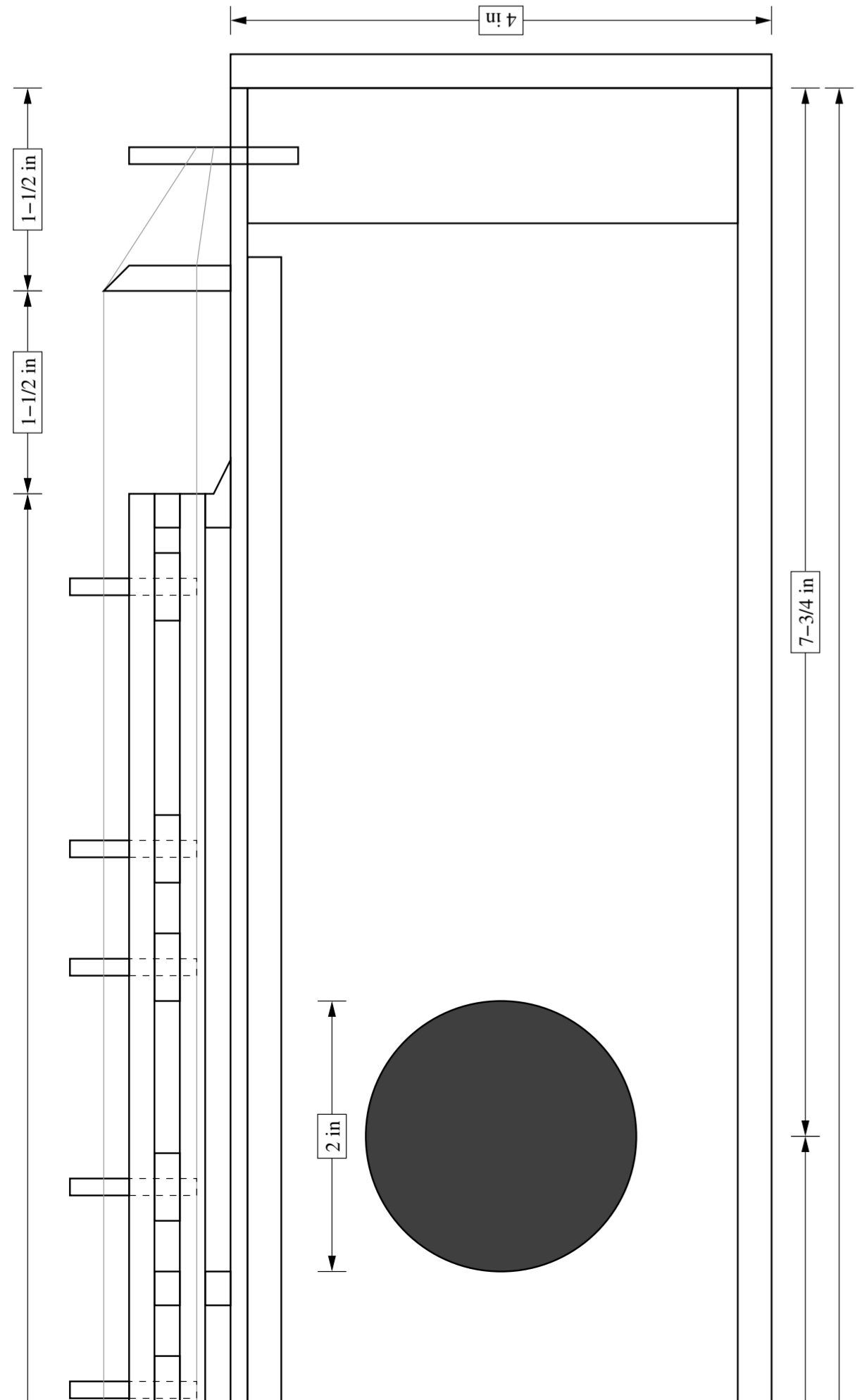
d: Key pad offsets from right of key:

- A1 = 3/16"
- B1 = 11/16" (3/16" from left)
- C1 = 3/16"
- D1 = 7/16"
- E1 = 5/8" (1/16" from left)
- F1 = 1/16"
- G2 = 3/16"
- A2 = 3/16"
- B2 = 1/4" (0" from left)
- C2 = 0" (3/16" from left)
- D2 = 1/8"
- E2 = 1/8"
- F2 = 0"
- G3 = 0"



B1 = 11/16" (3/16" from left)  
C1 = 3/16"  
D1 = 7/16"  
E1 = 5/8" (1/16" from left)  
F1 = 1/16"  
G2 = 3/16"

B2 = 1/4" (0" from left)  
C2 = 0" (3/16" from left)  
D2 = 1/8"  
E2 = 1/8"  
F2 = 0"  
G3 = 0"



--	--

